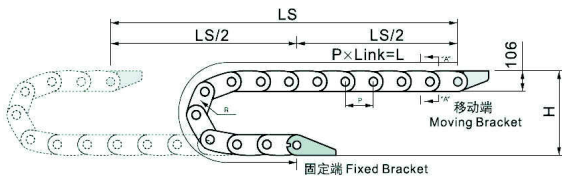


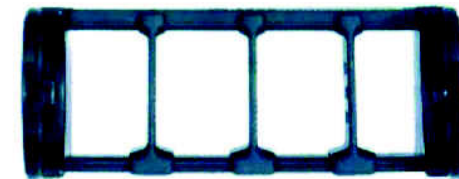
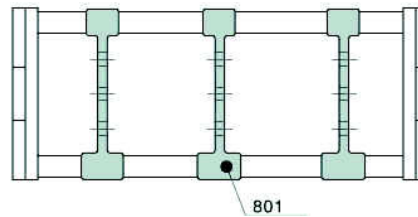
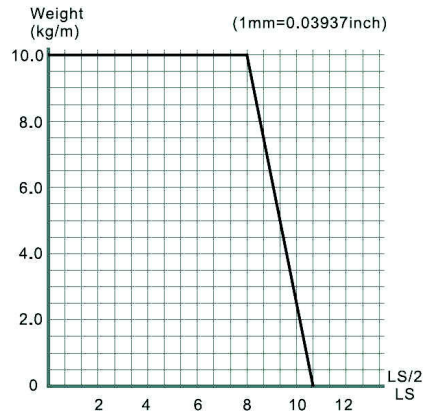
# K8000/8050 series Installation Dimensions & Tech Data

## Length calculation

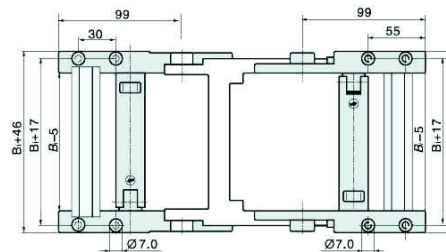


$$L = \frac{LS}{2} + \pi \times R + 364$$

L: Length  
 R: bending Radius  
 H: Installation Height  
 P: Pitch  
 364: Safety Length



## Fixed bracket

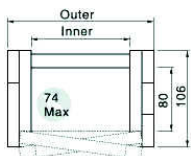


## Moving bracket



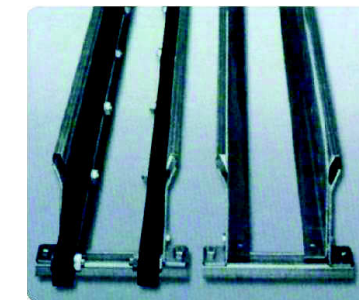
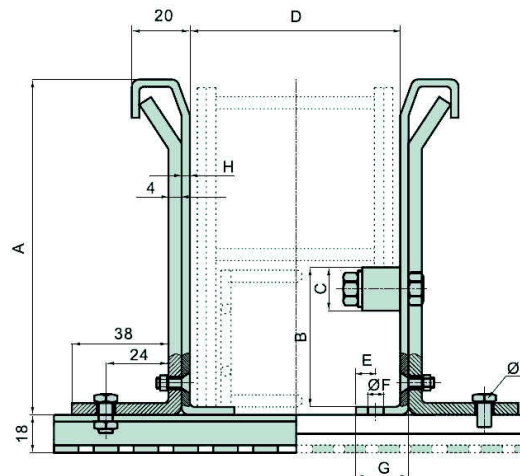
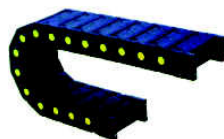
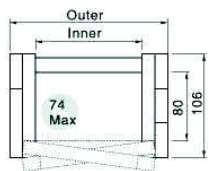
## K8000 series can be open by both side

| Type         | Inner width (mm) | Outer width (mm) | Bending radius(mm)  | Pitch (mm) |
|--------------|------------------|------------------|---------------------|------------|
| 8000.100.□.0 | 100              | 127              | 150 200 250 300 350 | 91         |
| 8000.125.□.0 | 125              | 152              | 150 200 250 300 350 | 91         |
| 8000.150.□.0 | 150              | 177              | 150 200 250 300 350 | 91         |
| 8000.175.□.0 | 175              | 202              | 150 200 250 300 350 | 91         |
| 8000.200.□.0 | 200              | 227              | 150 200 250 300 350 | 91         |
| 8000.250.□.0 | 250              | 284              | 150 200 250 300 350 | 91         |
| 8000.300.□.0 | 300              | 334              | 150 200 250 300 350 | 91         |
| 8000.350.□.0 | 350              | 384              | 150 200 250 300 350 | 91         |
| 8000.400.□.0 | 400              | 434              | 150 200 250 300 350 | 91         |



## K8050 series can be open by both side

| Type         | Inner width (mm) | Outer width (mm) | Bending radius(mm)  | Pitch (mm) |
|--------------|------------------|------------------|---------------------|------------|
| 8050.100.□.0 | 100              | 127              | 150 200 250 300 350 | 91         |
| 8050.125.□.0 | 125              | 152              | 150 200 250 300 350 | 91         |
| 8050.150.□.0 | 150              | 177              | 150 200 250 300 350 | 91         |



|                                |     |
|--------------------------------|-----|
| Cable tray without slide strip | 1   |
| Cable tray with slide strip    | 2   |
| A                              | 220 |
| B                              | 108 |
| C                              | 30  |
| D                              | *   |
| E                              | 20  |
| F                              | 14  |
| G                              | 50  |
| H                              | 2.5 |