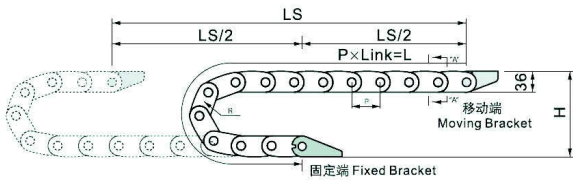


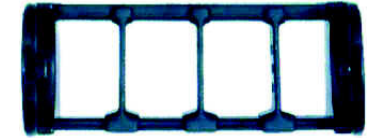
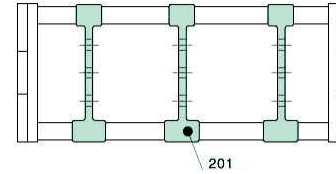
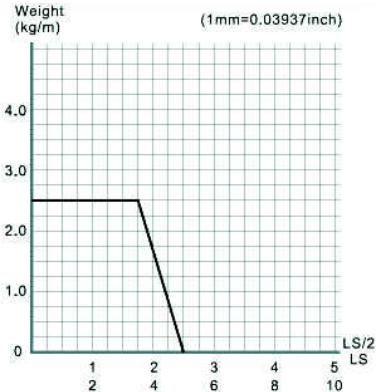
K2500 /2550 series Installation Dimensions & Tech Data

Length calculation

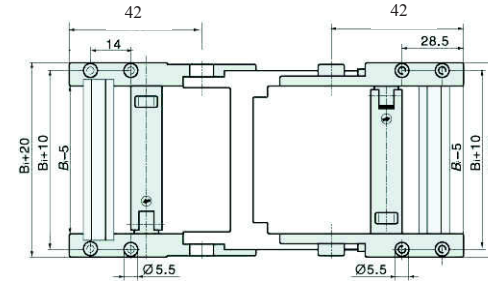


$$L = \frac{LS}{2} + \pi \times R + 180$$

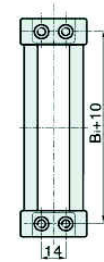
L: Length
R: bending Radius
H: Installation Height
P: Pitch
180: Safety Length



Fixed bracket

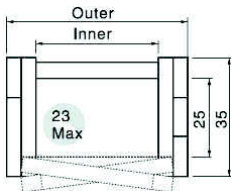


Moving bracket



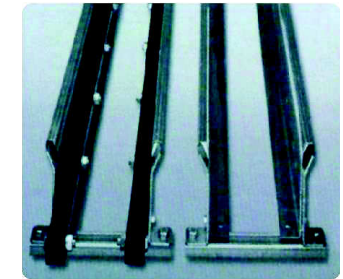
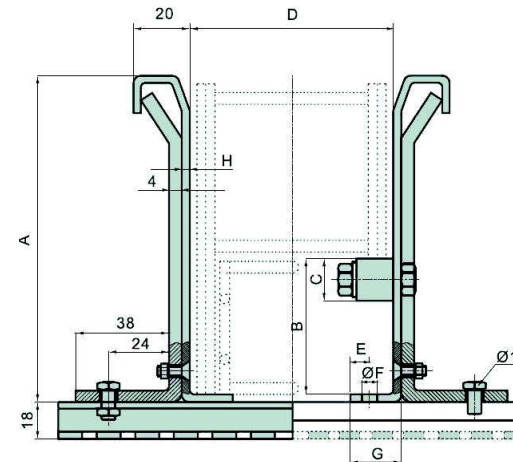
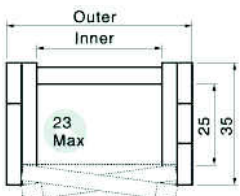
K2500 series can be open by both side

Type	Inner width (mm)	Outer width (mm)	Bending radius(mm)	Pitch (mm)
2500.040.□.0	38	54	55 75 100 125	45
2500.050.□.0	57	64	55 75 100 125	45
2500.075.□.0	77	89	55 75 100 125	45
2500.100.□.0	103	114	55 75 100 125	45



K2550 series can be open by both side

Type	Inner width (mm)	Outer width (mm)	Bending radius(mm)	Pitch (mm)
2550.038.□.0	38	54	55 75 100 125	45
2550.057.□.0	57	73	55 75 100 125	45
2550.077.□.0	77	93	55 75 100 125	45



Cable tray without slide strip	1
Cable tray with slide strip	2
A	70
B	34
C	20
D	*
E	12
F	9
G	26
H	2